

A PATTERN OF EXCELLENCE.
Introducing the MICHELIN® XHA™ 2 Tire.





**Introducing the MICHELIN® XHA™ 2.
The Loader Tire for the 21st Century.**

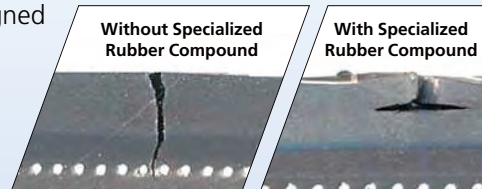
DURABILITY

The MICHELIN® XHA™ 2 tire decreases downtime and enhances productivity.

The MICHELIN® XHA™ 2 radial tire is a powerful performance driver for your loader, designed to stand up to diverse, rugged construction conditions and quarry stockpile work.

Robust construction is the trademark of the MICHELIN® XHA™ 2 tire. Its sidewalls have a thicker band of rubber and a newly designed protective rib at the edge of the shoulder tread to help protect these areas from damage. In case damage does occur, Michelin has developed a special sidewall rubber compound designed to deflect splits and cuts into the sidewall instead of toward the air chamber.

The wider tread pattern provides optimal traction, and the deeper tread helps resist damage and wear longer. The MICHELIN® XHA™ 2 tire's wider footprint and new tread design provide traction when you need it most. So you can rely on the MICHELIN® XHA™ 2 loader tire to help keep your operation running smoothly and productively.



Innovative sidewall rubber compound resists expansion of cuts and splits into the air chamber to help reduce costly flats.

- 2-star rated robust casing on 26.5R25 and 29.5R25 sizes
- 9% deeper tread than the MICHELIN® XHA™ tire for longer lifespan
- Larger contact patch to increase stability and traction
- Strengthened sidewall and shoulder help reduce tire damage to decrease downtime



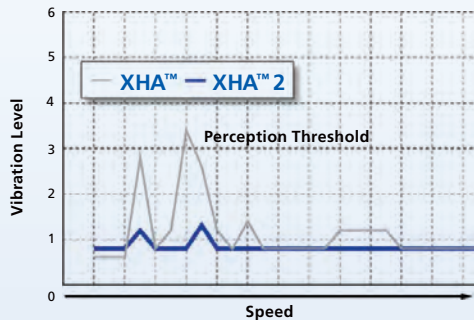
COMFORT

The MICHELIN® XHA™ 2 tire improves operator working conditions.

The patented MICHELIN® XHA™ 2 tire tread pattern is designed to help reduce vibration by up to 50%*, minimizing mechanical damage to your equipment and maximizing driver comfort. The deeper, wider tread and optimized casing create a wider footprint that helps assure the machine's stability and enhance damage resistance.

The MICHELIN® XHA™ 2 tire's wider footprint helps reduce the oscillations caused by heavy loads and frequent changes of direction, providing loader operators with more comfortable working conditions. It takes tremendous concentration to transport heavy loads quickly and safely. Because the MICHELIN® XHA™ 2 tire's robust design creates increased comfort for your loader operators, they can focus on doing a tough job safely and effectively.

VIBRATION TEST (loaded machine)



- Wider footprint assures stability
- Self-cleaning asymmetrical tread
- Patented tread design reduces vibration for optimized comfort

*Based on internal tests versus the MICHELIN XHA™ tire.

The leading edge of the tire always makes gradual contact with the ground. The tread design keeps the rubber continuously in contact with the surface to noticeably reduce the vibration.

ENVIRONMENTAL RESPONSIBILITY

The MICHELIN® XHA™ 2 tire is better for the environment.

The MICHELIN® XHA™ 2 tire is designed with Michelin's commitment to the environment in mind. Not only is the MICHELIN® XHA™ 2 tire more durable and longer lasting than the MICHELIN® XHA™ tire, it features a new belt design that has been optimized for retreading. The MICHELIN® XHA™ 2 radial tire also consumes less fuel. That means less waste for the planet and greater savings for you.

The MICHELIN® XHA™ 2 tire is manufactured without the use of aromatic oils. And MICHELIN® XHA™ 2 tires are made in our ISO 14001 certified factories, which have reduced their environmental impact more than 16 percent since 2005.

Environmentally responsible manufacturing, reduced fuel consumption and reliable and retreadable casing—that makes the MICHELIN® XHA™ 2 tire your choice for the future.

- *Increased tread rubber and wider footprint for longevity*
- *Strengthened sidewalls and shoulder to resist damage*
- *New optimized belt design for easier retreading*
- *Environmentally friendly compound*



VALUE

The MICHELIN® XHA™ 2 tire reduces hourly operating costs.

The MICHELIN® XHA™ 2 tire is designed to be the most productive tire on the market. It truly offers value while also delivering improved productivity. The MICHELIN® XHA™ 2 tire delivers at least five percent more wear life than the MICHELIN® XHA™ tire, which is currently the benchmark tire on worksites worldwide.

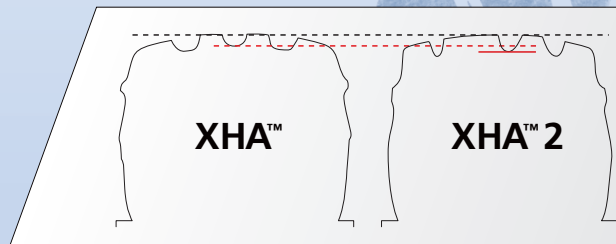
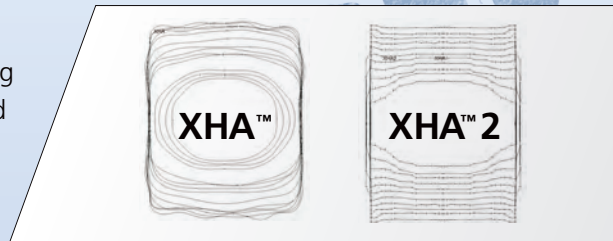
Thanks to the optimized tread and low rolling resistance, the MICHELIN® XHA™ 2 tire reduces fuel consumption. Because grip is enhanced, engine power is transmitted to the ground more efficiently. This optimizes vehicle operating time and increases productivity, which in turn reduces fuel consumption for the amount of material moved.

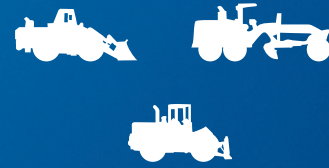
The MICHELIN® XHA™ 2 tire's casing is designed with retreading in mind. The belt package makes it easier to remove the remaining rubber and facilitate the application of the tread.



Exceptionally durable, with outstanding long life, decreased fuel consumption and enhanced retreadability, the MICHELIN® XHA™ 2 radial tire is an investment that helps reduce operating costs and improve your bottom line.

The MICHELIN® XHA™ 2 tire offers 5% longer tread life than the MICHELIN® XHA™ tire due to a 9% deeper tread pattern and a wider optimized footprint.





TIRE SIZES

20.5R25*
23.5R25*
26.5R25**
29.5R25**
875/65R29*

Don't just take our word for it. Find out what our customers have to say about the MICHELIN® XHA™ 2 tire.

To discover more, visit
michelinearthmover.com.



Michelin is committed to providing you with better mobility through our dedication to improved performance, efficiency, safety and comfort with each tire we build.

MICHELIN NORTH AMERICA, INC.
One Parkway South, P.O. Box 19001
Greenville, SC 29602-9001
1-877-574-8473

MICHELIN NORTH AMERICA (CANADA), INC.
3020 Avenue Jacques-Bureau
Laval, Quebec H7P 6G2
1-800-361-0084

MICHELIN MEXICO
Av. 5 de Febrero No. 2113-A
Fracc. Industrial Benito Juarez
Querétaro, Qro. C.P. 76120
442 296 16 00

www.michelinearthmover.com
An Equal Opportunity Employer
©2009 MNA, Inc.
(1/14) MEL43646

